

How It Works

Communication is sent from the servers

- a) School Admin - Schedule, Track & Monitor trips
- b) Check in/Check out Gadget provided
- c) Drivers data is captured for security & performance
- d) Billing reports and analytics per vehicle

SUB MODULES

User Management

Allows onboarding and role setting for the system users

Student Registration

Allow capture of student information & mapping them to routes

Reports & Analytics

Bunifu Recommendation

Bunifu Technologies recommends use of NFC cards due to its versatility and compatibility with almost all NFC enabled smart phones.

The key fob is most suitable for young students since it can be pinned to the school bag. The RFID/NFC card on the other hand allows printing on top and inclusion of a QR/Barcode on the same card. The card therefore acts as a smart school ID which can be reused for other purposes such as library access.

Due to data protection policies, the company discourages use of biometric data capture.

MODULES

**STUDENT
TRANSPORT
MANAGEMENT**
Handles the
entire process

A

**ATTENDANCE
MODULE**

Everyday tracking
and analytics

B

**COMMUNICATION
MODULE**

via mobile app,
SMS and
email alerts.

C

BILLING

Ensure only
students who have
paid use the
transport services

D



A Nexus of Engineering & Technology

This is technical proposal for the provision of a transport management solution for

The solution also comes with the following inbuilt sub modules; attendance, communication and billing.

CONTACT

Bunifu Technologies Limited,

P.O Box 41064 – 00100, Nairobi, Kenya
Zambia road off Ngong Road, Ngong town

Call: +254 791 801 799

Website: <https://bunifugo.com>
Email: sales@bunifugo.com

Bunifu



Student Transport Management Platform

Empowers schools to run an efficient, orderly, transport system with real-time tracking and notifications

PROPOSAL

How It Works

Communication is sent from the servers

- a) School Admin - Schedule, Track & Monitor trips
- b) Check in/Check out Gadget provided
- c) Drivers data is captured for security & performance
- d) Billing reports and analytics per vehicle

SUB MODULES

User Management

Allows onboarding and role setting for the system users

Student Registration

Allow capture of student information & mapping them to routes

Reports & Analytics

Bunifu Recommendation

Bunifu Technologies recommends use of NFC cards due to its versatility and compatibility with almost all NFC enabled smart phones.

The key fob is most suitable for young students since it can be pinned to the school bag. The RFID/NFC card on the other hand allows printing on top and inclusion of a QR/Barcode on the same card. The card therefore acts as a smart school ID which can be reused for other purposes such as library access.

Due to data protection policies, the company discourages use of biometric data capture.

MODULES

**STUDENT
TRANSPORT
MANAGEMENT**
Handles the
entire process

A

**ATTENDANCE
MODULE**

Everyday tracking
and analytics

B

**COMMUNICATION
MODULE**

via mobile app,
SMS and
email alerts.

C

BILLING

Ensure only
students who have
paid use the
transport services

D



A Nexus of Engineering & Technology

This is technical proposal for the provision of a transport management solution for

The solution also comes with the following inbuilt sub modules; attendance, communication and billing.

CONTACT

Bunifu Technologies Limited,

P.O Box 41064 – 00100, Nairobi, Kenya
Zambia road off Ngong Road, Ngong town

Call: +254 791 801 799

Website: <https://bunifugo.com>
Email: sales@bunifugo.com

Bunifu



Student Transport Management Platform

Empowers schools to run an efficient, orderly, transport system with real-time tracking and notifications

PROPOSAL

Background

Bunifu is a technology company specializing in provision of processes automation solutions for learning institutions and developing productivity tools for software developers globally.

Bunifu was incorporated in 2014 and is led by a board, with representatives of Centum PLC who are our investment partners and is chaired by John Sergon the immediate former CEO – ICT Authority.

The Problem Statement

- ❶ Difficulty in tracking/monitoring
- ❷ Safety of students is not guaranteed
- ❸ Anxious parents due to uncertainty
- ❹ Tedious process of picking and dropping
- ❺ Inability to measure efficiency & productivity
- ❻ Manual filing of records makes it susceptible to damage, theft and lose
- ❼ Communication among stakeholder is problematic
- ❽ Managing billing information and costs is a laborious process

Agent Device

- Android 9.0 OS
- 2G RAM and 32GB ROM
- 5000mAh or 7500mAh battery
- NFC enabled
- Fingerprint reader
- 2D barcode/QR code reader
- IP67 gadget
- Storage of up to 1000 fingerprints

Background

Bunifu is a technology company specializing in provision of processes automation solutions for learning institutions and developing productivity tools for software developers globally.

Bunifu was incorporated in 2014 and is led by a board, with representatives of Centum PLC who are our investment partners and is chaired by John Sergon the immediate former CEO – ICT Authority.

The Problem Statement

- ❶ Difficulty in tracking/monitoring
- ❷ Safety of students is not guaranteed
- ❸ Anxious parents due to uncertainty
- ❹ Tedious process of picking and dropping
- ❺ Inability to measure efficiency & productivity
- ❻ Manual filing of records makes it susceptible to damage, theft and lose
- ❼ Communication among stakeholder is problematic
- ❽ Managing billing information and costs is a laborious process

Bunifu Agent Device

- Android 9.0 OS
- 2G RAM and 32GB ROM
- 5000mAh or 7500mAh battery
- NFC enabled
- Fingerprint reader
- 2D barcode/QR code reader
- IP67 gadget
- Storage of up to 1000 fingerprints

Proposed Solution

Bunifu Go app addresses these concerns amicably in a simple and seamless way to ensure safety of students, improved communication between stake holders while automating the student transport process.

Enhancing Safety & Efficiency In School Transport

- Track Trips**
Parent can track, monitor and get alerts on child(s) trip progress.
- Communicate Precisely**
Empowers parents to communicate directly with bus agents.
- Analyze Performance**
Empowers the school to track trip progress, monitor bus agent performance & monitor attendance.
- Monitor & Evaluate**
Schools get to retrieve student attendance reports, route efficiency, billing reports.

The solution comes with four key modules:

- 01 Student transport management
- 02 Attendance module
- 03 Communication
- 04 Billing

The other sub modules are ;

- 01 User management
- 02 Student management
- 03 Reports and analytics

Benefits To School

- ✔ **Efficient scheduling & Route Management:**
Easily of mapping students to a route by efficiently assign respective vehicles
- ✔ **Built-in communication platform :**
Bunifu Go comes with a communication platform at no extra charge for the school with intelligent messaging
- ✔ **Billing & Reporting**
With Bunifu Go the school get real-time student attendance reports, billing reports and analytics per vehicle and transport company

Benefits To Parents

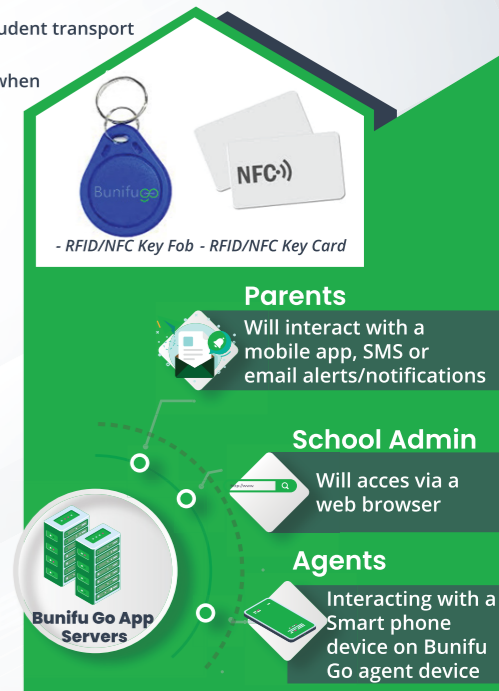
- ✔ **Peace of mind:**
Reliable and non-intrusive mechanism to track student transport
- ✔ **Informed & Updated:**
View trip status, receive alerts and notifications when the bus nears their station hence save on time
- ✔ **Easy communication:**
Seamless communication between the school, transport provider and the parent

System Approach

The solution is a cloud-based application with mobile app end points for the different user agents (Bus agent, school agent and parents).

Use of SMS/Email alleviates need of a mobile app on the side of the parent. For increased efficiency students can be issued with NFC/RFID tags, QR/Bar coded cards or their biometric data captured.

The tags, cards and biometric data capture however, is not mandatory since the mobile app can be used independently.



Proposed Solution

Bunifu Go app addresses these concerns amicably in a simple and seamless way to ensure safety of students, improved communication between stake holders while automating the student transport process.

Enhancing Safety & Efficiency In School Transport

- Track Trips**
Parent can track, monitor and get alerts on child(s) trip progress.
- Communicate Precisely**
Empowers parents to communicate directly with bus agents.
- Analyze Performance**
Empowers the school to track trip progress, monitor bus agent performance & monitor attendance.
- Monitor & Evaluate**
Schools get to retrieve student attendance reports, route efficiency, billing reports.

The solution comes with four key modules:

- 01 Student transport management
- 02 Attendance module
- 03 Communication
- 04 Billing

The other sub modules are ;

- 01 User management
- 02 Student management
- 03 Reports and analytics

Benefits To School

- ✔ **Efficient scheduling & Route Management:**
Easily of mapping students to a route by efficiently assign respective vehicles
- ✔ **Built-in communication platform :**
Bunifu Go comes with a communication platform at no extra charge for the school with intelligent messaging
- ✔ **Billing & Reporting**
With Bunifu Go the school get real-time student attendance reports, billing reports and analytics per vehicle and transport company

Benefits To Parents

- ✔ **Peace of mind:**
Reliable and non-intrusive mechanism to track student transport
- ✔ **Informed & Updated:**
View trip status, receive alerts and notifications when the bus nears their station hence save on time
- ✔ **Easy communication:**
Seamless communication between the school, transport provider and the parent

System Approach

The solution is a cloud-based application with mobile app end points for the different user agents (Bus agent, school agent and parents).

Use of SMS/Email alleviates need of a mobile app on the side of the parent. For increased efficiency students can be issued with NFC/RFID tags, QR/Bar coded cards or their biometric data captured.

The tags, cards and biometric data capture however, is not mandatory since the mobile app can be used independently.

